



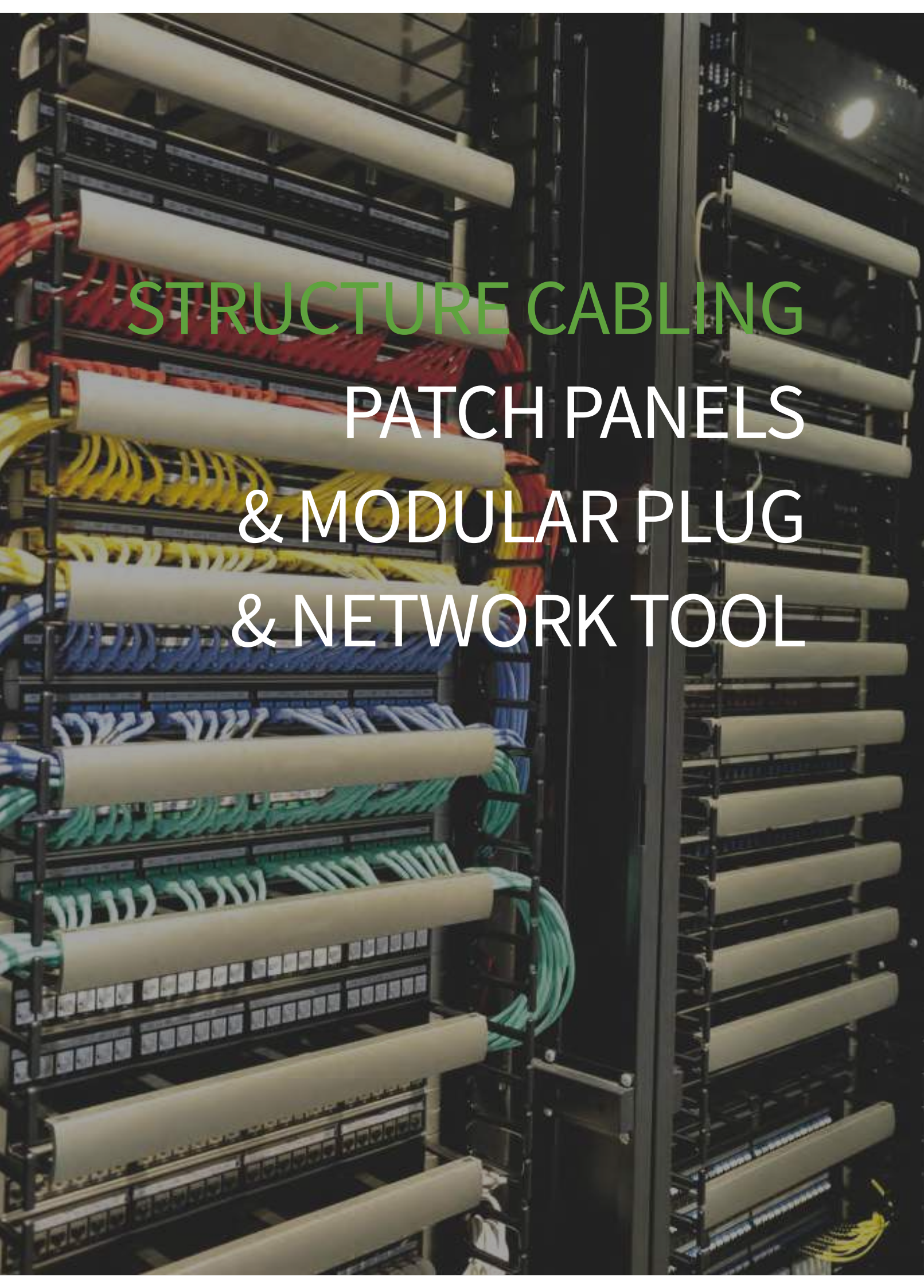
Products

PATCH PANELS

ZION
Communication



Zion Communication
Structured Cabling & Data Center

A photograph of a server rack filled with network equipment. The rack is filled with various components, including network cables (red, yellow, blue, green) and patch panels. The cables are organized and bundled with white sleeves. The background is dark, and the lighting is focused on the equipment.

STRUCTURE CABLING
PATCH PANELS
& MODULAR PLUG
& NETWORK TOOL



STRUCTURE CABLING PATCH PANELS & MODULAR PLUG & NETWORK TOOL

Covering the American, British , German, Chinese and other types of UTP/FTP patch panels.

Comply with ISO/IEC 11801 EIA/EIA568C.

Having the internal patch panels matching 19"/10" cabinets and external patch panel.

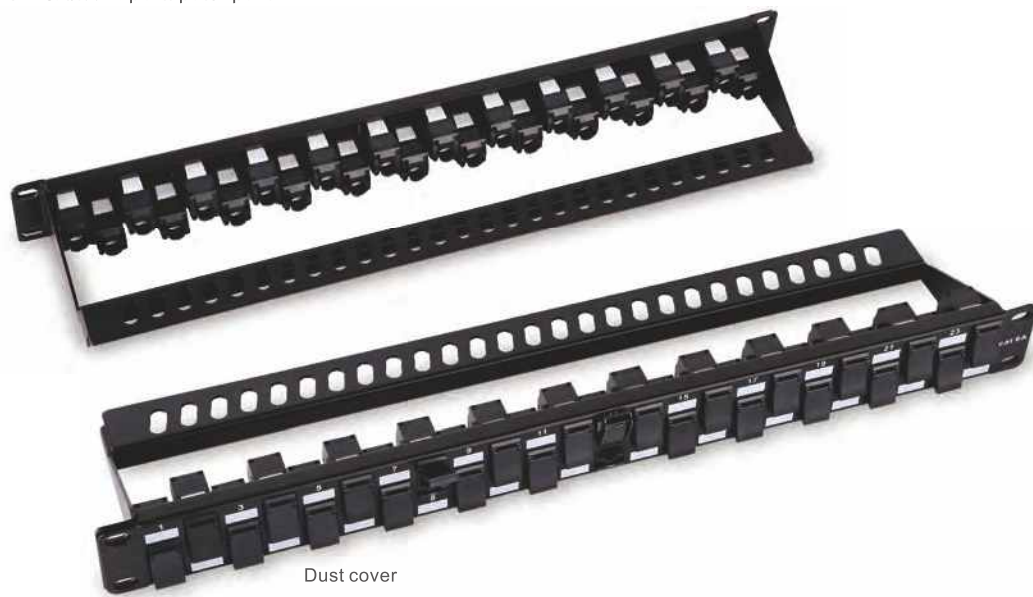
Covering ,CAT5e, CAT6, CAT 6a and other various types.



STRUCTURE CABLING PATCH PANELS

ZP202-24-C6A

UTP Cat.6A 24 ports patch panel



Dust cover



ZM242-C6A

Features

- Meet ISO/IEC 11801, TIA/EIA568C.
- With cable manager.
- Fit for wires AWG22-26.
- IDC contacts: Maximum 200 reterminations.
Min. life 750 insertions.
- Material: PC/ABS for cover, PC for module ,
phosphor bronze for IDC.
- Toolless.

Order Information:

Item No.	Description
ZP202-24-C6A	Cat6A 19", 1U, 24ports



STRUCTURE CABLING PATCH PANELS

ZP197A

UTP Cat.6 patch panel.



Features

- Meet ISO/IEC 11801, TIA/EIA568C.
- Own patent products.
- With cable manager.
- Fit for wires AWG22-26.
- IDC contacts: Maximum 200 reterminations.
- Min. life 750 insertions.
- Material: PC/ABS for cover, PC for module , phosphor bronze for IDC.
- 110 IDC.

Order Information:

Item No.	Description
ZP197-24A	Cat6 19", 1U, 24ports
ZP197-48A	Cat6 19", 1U, 48 ports



STRUCTURE CABLING PATCH PANELS

ZP1 97U(P197)

UTP Cat 5e Patch Panel



Features

- Meet ISO/IEC 11801, TIA/EIA568C.
- Fit for wires AWG22-26.
- IDC contacts: Maximum 200 reterminations.
- Min. life 750 insertions.
- Material: PC/ABS for cover, PC for module , phosphor bronze for IDC.
- Dual IDC.

Order Information:

Item No.	Description
ZP197-24U	Cat 5e 19", 1U, 24 ports
ZP197-48U	Cat 5e 19", 2U, 48 ports

ZP197U-C6

UTP CAT 6 Patch Panel



Features

- Meet ISO/IEC 11801, TIA/EIA568C.
- Fit for wires AWG22-26.
- IDC contacts: Maximum 200 reterminations.
- Min. life 750 insertions.
- Material: PC/ABS for cover, PC for module , phosphor bronze for IDC.
- Dual IDC.

Order Information:

Item No.	Description
ZP197-24U-C6	Cat5e 19", 1U, 24 ports
ZP197-48U-C6	Cat5e 19", 2U, 48 ports



STRUCTURE CABLING PATCH PANELS

ZP199/P200-24-1/2

Cat 6/6A shielded patch panel.



Each keystone could be removed or installed, easy for maintenance .



M262 MODULES



M264 MODULES

Features

- 24 ports Cat6/Cat6A fully shielded.
- With cable manager.
- Fit for wires AWG22-26.
- IDC contacts: Maximum 200 reterminations.
- Min. life 750 insertions.
- Material: PC/ABS for cover, PC for module , phosphor bronze for IDC.
- Jack Housing: zinc alloy.

Order Information:

Item No.	Description
ZP199-24-1	Cat6 M262-C6 Jack
ZP199-24-2	Cat6 M264-C6 Jack
ZP200-24-1	Cat6A M262-C6A Jack
ZP200-24-2	Cat6A M264-C6A Jack



STRUCTURE CABLING PATCH PANELS

ZP197K

Cat 5e patch panel.



Features

- Meet ISO/IEC 11801, TIA/EIA568C.
- Fit for wires AWG22-26.
- IDC contacts: Maximum 200 reterminations.
- Min. life 750 insertions.
- Material: PC/ABS for cover, PC for module , phosphor bronze for IDC.
- Dual IDC.

Order Information:

Item No.	Description
ZP197-12K	Cat5e 19", 1U, 12 ports
ZP197-24K	Cat5e 19", 1U, 24 ports
ZP197-48K	Cat5e 19", 2U, 48 ports

ZP197P

Cat.6 patch panel.



Features

- Meet ISO/IEC 11801, TIA/EIA568C.
- Fit for wires AWG22-26.
- IDC contacts: Maximum 200 reterminations.
- Min. life 750 insertions.
- Material: PC/ABS for cover, PC for module , phosphor bronze for IDC.
- Dual IDC.

Order Information:

Item No.	Description
ZP197-12P	Cat6 19", 1U, 12 ports
ZP197-24P	Cat6 19", 1U, 24 ports
ZP197-48P	Cat6 19", 2U, 48 ports



STRUCTURE CABLING PATCH PANELS

ZP197N5

Cat 5e patch panel.



Features

- Meet ISO/IEC 11801, TIA/EIA568C.
- Fit for wires AWG22-26.
- IDC contacts: Maximum 200 reterminations.
- Min. life 750 insertions.
- Material: PC/ABS for cover, PC for module , phosphor bronze for IDC.
- The internal PCB is directly screwed onto the iron panel. The whole product is strong and stable without any looseness.
- Dual IDC.

Order Information:

Item No.	Description
ZP197-24N5	Cat5e 19", 1U, 24ports
ZP197-48N5	Cat5e 19", 2U, 48 ports

ZP197N6

Cat 6 patch panel.



Features

- Meet ISO/IEC 11801, TIA/EIA568C.
- Fit for wires AWG22-26.
- IDC contacts: Maximum 200 reterminations.
- Min. life 750 insertions.
- Material: PC/ABS for cover, PC for module , phosphor bronze for IDC.
- The internal PCB is directly screwed onto the iron panel. The whole product is strong and stable without any looseness.
- Dual IDC.

Order Information:

Item No.	Description
ZP197-24N6	Cat6 19", 1U, 24ports
ZP197-48N6	Cat6 19", 2U, 48 ports



STRUCTURE CABLING PATCH PANELS

ZP197N7

Cat 5e patch panel.



Features

- Meet ISO/IEC 11801, TIA/EIA568C.
- Fit for wires AWG22-26.
- IDC contacts: Maximum 200 reterminations.
- Min. life 750 insertions.
- Material: PC/ABS for cover, PC for module , phosphor bronze for IDC.
- The internal PCB is directly screwed onto the iron panel. The whole product is strong and stable without any looseness.
- Dual IDC.
- Slide label field.

Order Information:

Item No.	Description
ZP197-24N7	Cat5e 19", 1U, 24ports
ZP197-48N7	Cat5e 19", 2U, 48 ports

ZP197N8

Cat 6 patch panel.



Features

- Meet ISO/IEC 11801, TIA/EIA568C.
- With cable manager.
- Fit for wires AWG22-26.
- IDC contacts: Maximum 200 reterminations.
- Min. life 750 insertions.
- Material: PC/ABS for cover, PC for module , phosphor bronze for IDC.
- The internal PCB is directly screwed onto the iron panel. The whole product is strong and stable without any looseness.
- Dual IDC.
- Slide label field.

Order Information:

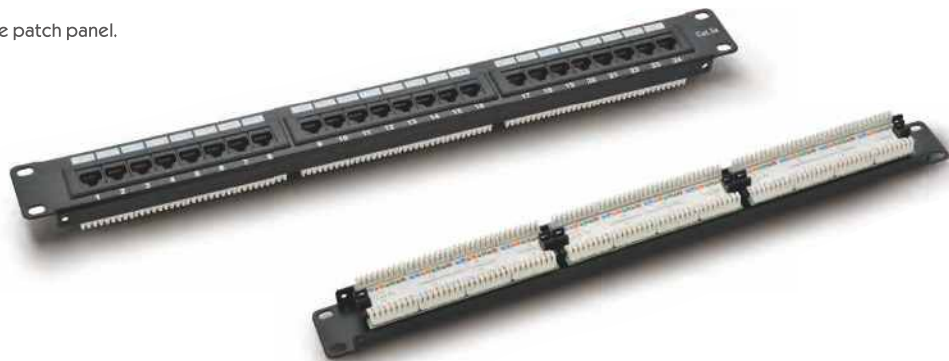
Item No.	Description
ZP197-24N8	Cat6 19", 1U, 24ports
ZP197-48N8	Cat6 19", 2U, 48 ports



STRUCTURE CABLING PATCH PANELS

ZP197F

British type Cat 5e patch panel.



Features

- Meet ISO/IEC 11801, TIA/EIA568C.
- Fit for wires AWG22-26.
- IDC contacts: Maximum 200 reterminations.
- Min. life 750 insertions.
- Material: PC/ABS for cover, PC for module , phosphor bronze for IDC.
- Krone IDC.

Order Information:

Item No.	Description
ZP197-16F	Cat5e 19",1U,16 ports
ZP197-24F	Cat5e 19",1U,24 ports
ZP197-48F	Cat5e 19",2U,48 ports

ZP197R

British type Cat 6 patch panel.



Features

- Meet ISO/IEC 11801, TIA/EIA568C.
- With cable manager.
- Fit for wires AWG22-26.
- IDC contacts: Maximum 200 reterminations.
- Min. life 750 insertions.
- Material: PC/ABS for cover, PC for module , phosphor bronze for IDC.
- Krone IDC.

Order Information:

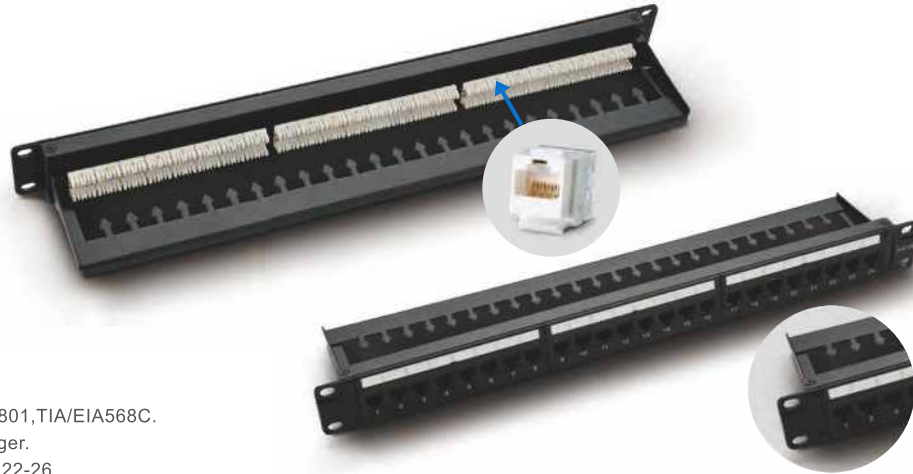
Item No.	Description
ZP197-16R	Cat6 19",1U,16 ports
ZP197-24R	Cat6 19",1U,24 ports
ZP197-48R	Cat6 19",2U,48 ports



STRUCTURE CABLING PATCH PANELS

ZP197-1

Cat 5e patch panel.



Features

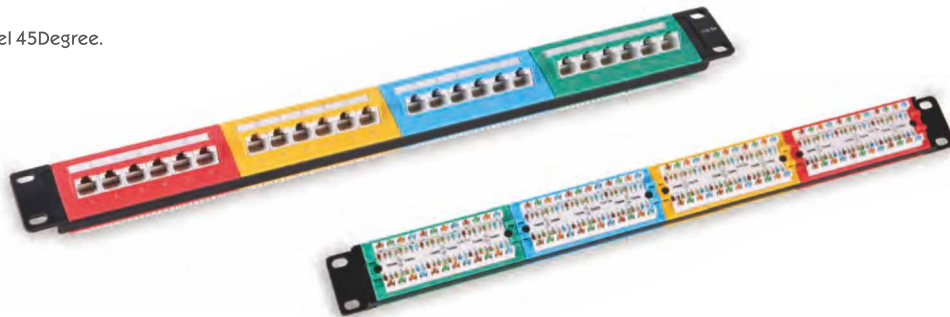
- Meet ISO/IEC 11801, TIA/EIA568C.
- With cable manager.
- Fit for wires AWG22-26.
- Each keystone could be removed or installed, easy for maintenance.
- IDC contacts: Maximum 200 reterminations.
- Min. life 750 insertions.
- Material: PC/ABS for cover, PC for module, phosphor bronze for IDC.
- 110 IDC.

Order Information:

Item No.	Description
ZP197-24-1	Cat5e 19", 1U, 24 ports
ZP197-48-1	Cat5e 19", 2U, 48 ports

ZP197D

Cat 5e patch panel 45Degree.



Features

- Meet ISO/IEC 11801, TIA/EIA568C.
- Fit for wires AWG22-26.
- IDC contacts: Maximum 200 reterminations.
- Min. life 750 insertions.
- Material: PC/ABS for cover, PC for module, phosphor bronze for IDC.
- Dual IDC.

Order Information:

Item No.	Description
ZP197-24D	Cat5e 19", 1U, 24 ports
ZP197-48D	Cat5e 19", 2U, 48 ports



STRUCTURE CABLING PATCH PANELS

ZP197-48C5/C6-1U

patch panel.



Features

- Meet ISO/IEC 11801, TIA/EIA568C.
- Fit for wires AWG22-26.
- IDC contacts: Maximum 200 reterminations.
- Min. life 750 insertions.
- Material: PC/ABS for cover, PC for module , phosphor bronze for IDC..

Order Information:

Item No.	Description
ZP197-48C5-1U	Cat5e 19", 1U, 48ports
ZP197-48C6-1U	Cat6 19", 1U, 48 ports

ZP197-24L5/L6

patch panel.



Features

- Meet ISO/IEC 11801, TIA/EIA568C.
- Min. life 750 insertions.
- Install 24PCS Cat5e/6 coupler.
- Provide extension solution.

Order Information:

Item No.	Description
P197-24L5	Cat5e M225 Jack
P197-24L6	Cat6 M226 Jack



STRUCTURE CABLING PATCH PANELS

ZP206-24-C5

0.5U cat 5e patch panel.



Features

- Meet ISO/IEC 11801, TIA/EIA568C.
- Fit for wires AWG22-26.
- IDC contacts: Maximum 200 reterminations.
- Min. life 750 insertions.
- Material: PC/ABS for cover, PC for module , phosphor bronze for IDC..

Order Information:

Item No.	Description
ZP206-24-C5	Cat5e 19",0.5U,24ports

ZP206-24-C6

0.5U cat 6 patch panel.



Features

- Meet ISO/IEC 11801, TIA/EIA568C.
- Fit for wires AWG22-26.
- IDC contacts: Maximum 200 reterminations.
- Min. life 750 insertions.
- Material: PC/ABS for cover, PC for module , phosphor bronze for IDC..

Order Information:

Item No.	Description
ZP206-24-C6	Cat6 19",0.5U,24ports

ZP206-24-C6A

0.5U cat6A patch panel.



Features

- Meet ISO/IEC 11801, TIA/EIA568C.
- Fit for wires AWG22-26.
- IDC contacts: Maximum 200 reterminations.
- Min. life 750 insertions.
- Material: PC/ABS for cover, PC for module , phosphor bronze for IDC..

Order Information:

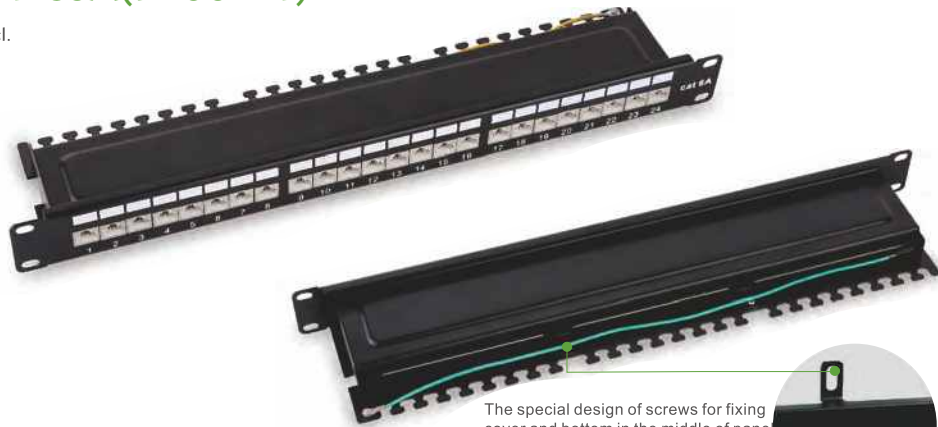
Item No.	Description
ZP206-24-C6A	Cat6A 19",0.5U,24 ports



STRUCTURE CABLING PATCH PANELS

ZP203-24-C6A(P200-24)

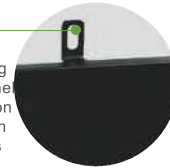
Cat 6A patch panel.



Features

- 24 ports cat6A fully shielded.
- Own patent products.
- With cable manager.
- Fit for wires AWG22-26.
- IDC contacts: Maximum 200 reterminations.
- Min. life 750 insertions.
- Material: PC/ABS for cover, PC for module , phosphor bronze for IDC.

The special design of screws for fixing cover and bottom in the middle of panel facilitates the subsequent construction and maintenance. ---- If screws are on sides of panel, after fixing cables, it is not convenient to remove screws.

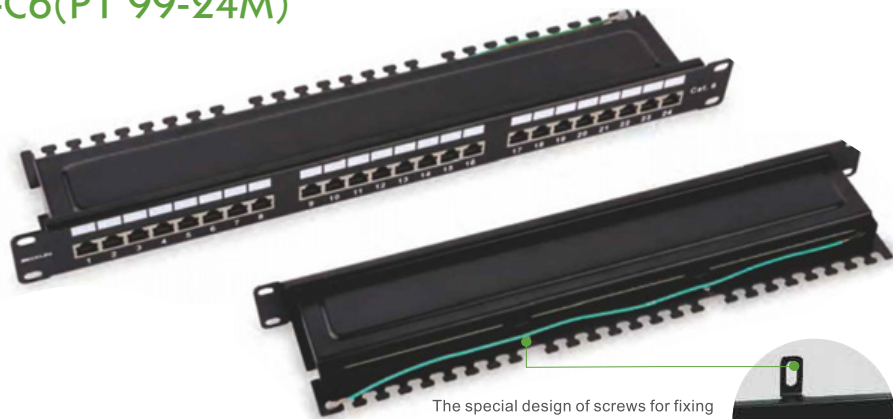


Order Information:

Item No.	Description
ZP203-24-C6A	Cat6A 19",1U,24 ports

ZP203-24-C6(P1 99-24M)

Cat 6 patch panel.



Features

- 24 ports Cat6 fully shielded.
- With cable manager.
- Fit for wires AWG22-26.
- IDC contacts: Maximum 200 reterminations.
- Min. life 750 insertions.
- Material: PC/ABS for cover, PC for module , phosphor bronze for IDC.

The special design of screws for fixing cover and bottom in the middle of panel facilitates the subsequent construction and maintenance. ---- If screws are on sides of panel, after fixing cables, it is not convenient to remove screws.



Order Information:

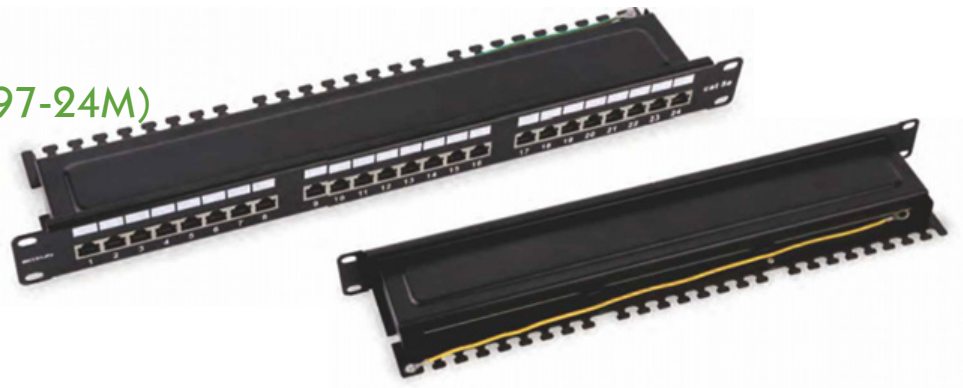
Item No.	Description
ZP203-24-C6	Cat6 19",1U,24 ports



STRUCTURE CABLING PATCH PANELS

ZP203-24-C5(P197-24M)

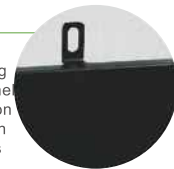
Cat 5e patch panel.



Features

- 24 ports Cat5e fully shielded.
- With cable manager.
- Fit for wires AWG22-26.
- IDC contacts: Maximum 200 reterminations.
- Min. life 750 insertions.
- Material: PC/ABS for cover, PC for module , phosphor bronze for IDC.

The special design of screws for fixing cover and bottom in the middle of panel facilitates the subsequent construction and maintenance. ---- If screws are on sides of panel, after fixing cables, it is not convenient to remove screws.

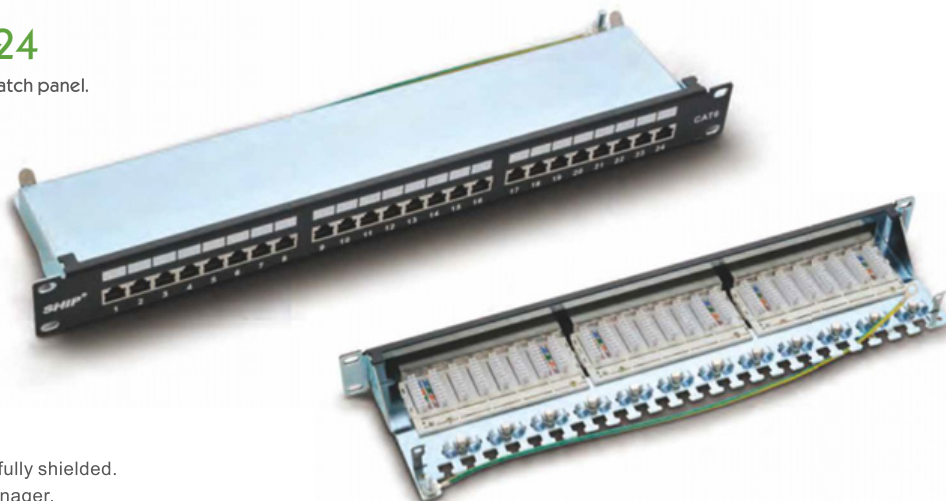


Order Information:

Item No.	Description
ZP203-24-C5	Cat5e 19",1U,24ports

ZP199-24

Cat 6 shielded patch panel.



Features

- 24 ports Cat6 fully shielded.
- With cable manager.
- Fit for wires AWG22-26.
- IDC contacts: Maximum 200 reterminations.
- Min. life 750 insertions.
- Material: PC/ABS for cover, PC for module , phosphor bronze for IDC.

Order Information:

Item No.	Description
ZP199-24	Cat6 19".1u,24 ports



STRUCTURE CABLING PATCH PANELS

ZP203-8R

10" shielded 8 ports patch panel.



Order Information:

Item No.	Description	Size
ZP203-8R-C5	Cat5e	254*100*44mm
ZP203-8R-C6	Cat6	
ZP203-8R-C6A	Cat6A	

ZP203-8

shielded 8 ports patch panel(Desktop).

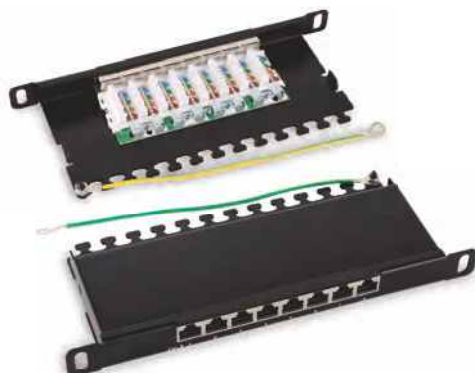


Order Information:

Item No.	Description	Size
ZP203-8-C5	Cat5e	212*100*44mm
ZP203-8-C6	Cat6	
ZP203-8-C6A	Cat6A	

ZP205-8R

10" 0.5U shielded 8 ports patch panel.

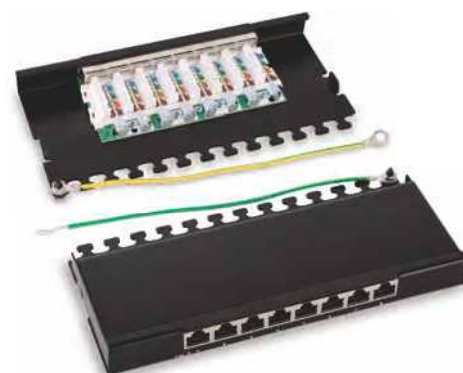


Order Information:

Item No.	Description	Size
ZP205-8R-C5	Cat5e	254*100*22mm
ZP205-8R-C6	Cat6	
ZP205-8R-C6A	Cat6A	

ZP205-8

0.5U shielded 8 ports patch panel(Desktop).



Order Information:

Item No.	Description	Size
ZP205-8-C5	Cat5e	212*100*22mm
ZP205-8-C6	Cat6	
ZP204-8-C6A	Cat6A	



STRUCTURE CABLING PATCH PANELS

ZP197-25-1

Voice patch panel.



Features

- 25 Ports Voice Patch Panel(8P4C).
- Fit for wires AWG22-26.
- IDC contacts: Maximum 200 reterminations.
- Min. life 750 insertions.
- Material: PC/ABS for cover, PC for module , phosphor bronze for IDC.

Order Information:

Item No.	Description
ZP197-25-1	19".1U,25 ports

P197-50-1

Voice patch panel.



Features

- 50 Ports Voice Patch Panel(8P4C).
- Fit for wires AWG22-26.
- IDC contacts: Maximum 200 reterminations.
- Min. life 750 insertions.
- Material: PC/ABS for cover, PC for module , phosphor bronze for IDC.

Order Information:

Item No.	Description
ZP197-50-1	19",2U,50 ports



STRUCTURE CABLING PATCH PANELS

ZP203-12R

10" shielded 12 ports patch panel.



Order Information:

Item No.	Description	Size
ZP203-12R-C5	Cat5e	254*100*44mm
ZP203-12R-C6	Cat6	
ZP203-12R-C6A	Cat6A	

ZP203-12

shielded 12 ports patch panel(Desktop).



Order Information:

Item No.	Description	Size
ZP203-12-C5	Cat5e	212*100*44mm
ZP203-12-C6	Cat6	
ZP203-12-C6A	Cat6A	

ZP204-12R

10" 0.5U shielded 12 ports patch panel.



Order Information:

Item No.	Description	Size
ZP204-12R-C5	Cat5e	254*100*22mm
ZP204-12R-C6	Cat6	
ZP204-12R-C6A	Cat6A	

ZP204-12

0.5U shielded 12 ports patch panel(Desktop).



Order Information:

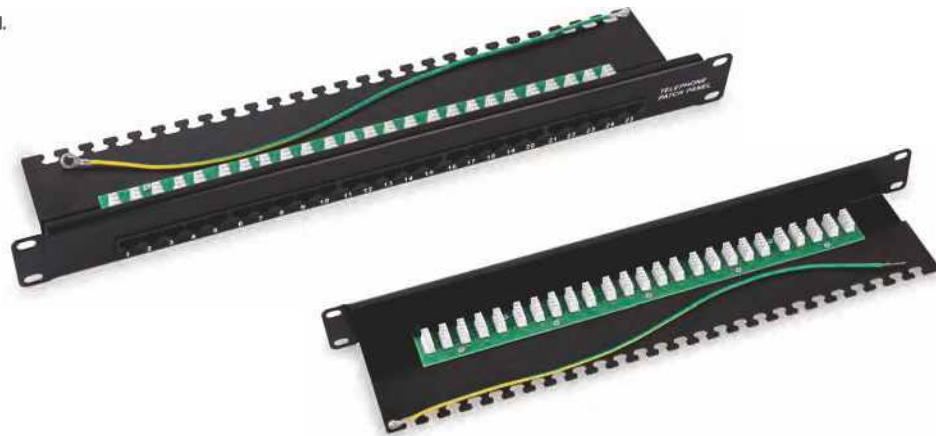
Item No.	Description	Size
ZP204-12-C5	Cat5e	212*100*22mm
ZP204-12-C6	Cat6	
ZP204-12-C6A	Cat6A	



STRUCTURE CABLING PATCH PANELS

ZP197-25

Voice patch panel.



Features

- 25 Ports Voice Patch Panel(8P4C).
- Fit for wires AWG22-26.
IDC contacts: Maximum 200 reterminations.
- Min. life 750 insertions.
- Material: PC/ABS for cover, PC for module ,
phosphor bronze for IDC.
- Dual IDC.

Order Information:

Item No.	Description
ZP197-25	19", 1U, 25 ports

ZP197-50

Voice patch panel.



Features

- 50 Ports Voice Patch Panel(8P4C).
- Fit for wires AWG22-26.
IDC contacts: Maximum 200 reterminations.
- Min. life 750 insertions.
- Material: PC/ABS for cover, PC for module ,
phosphor bronze for IDC.
- Dual IDC.

Order Information:

Item No.	Description
ZP197-50	19", 1U, 50 ports



STRUCTURE CABLING PATCH PANELS

ZP197-12B1

12 ports Cat 5e patch panel.



Features

- Meet ISO/IEC 11801, TIA/EIA568C.
- 110 IDC.

ZP197-12B2

12 ports Cat 5e patch panel.



Features

- Meet ISO/IEC 11801, TIA/EIA568C.
- DUAL IDC.

ZP197-12B3

12 ports Cat 6 patch panel.



Features

- Meet ISO/IEC 11801, TIA/EIA568C.
- DUAL IDC.

ZP202-24

24 ports blank patch panel (for utp cat 6A).





STRUCTURE CABLING PATCH PANELS

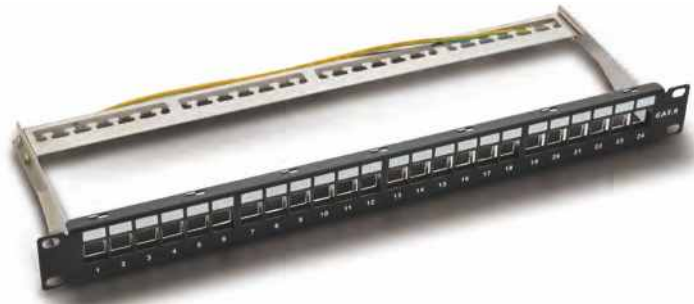
ZP196-24

24 ports blank patch panel.



ZP200-24B

24 ports shielded blank patch panel.



ZP201-24U

24 Ports blank patch panel(V type)



ZP201-24S

24 Ports shielded blank patch panel(V type)





STRUCTURE CABLING CABLE MANAGER

ZJ606

1u cable manager 5 rings(metal).



ZJ606B

2u cable manager 5 rings(metal).



ZJ606-1

1u cable manager 4 rings(metal).



ZJ606-1B

2u cable manager 4 rings(metal).





STRUCTURE CABLING CABLE MANAGER

ZJ606-5V2H

Cable manager (Metal) 7 rings.



ZJ606-4

Brush panel.



ZJ606-2

Cable manager (Metal Cover).



ZJ606-8





STRUCTURE CABLING CABLE MANAGER

ZJ606-9

2U cable manager(plastic),Single side



ZJ606-10

2U cable manager(plastic),double side



ZJ606-13

1U cable manager(plastic+metal)



ZJ606-14

1U Bank panel without screw





STRUCTURE CABLING MODULAR PLUG

ZS901A

Cat.5e Plug 8P8C 3U-50U
Unshielded.



ZS901B

Cat.5e Plug 8P8C 3U-50U
Shielded.



ZS901C

Telephone plug 6P4C
3U Unshielded.



ZS901D

Cat.6 Plug 8P8C 3U-50U
Unshielded.



ZS901E

Cat.6 Plug 8P8C 3U-50U
shielded.



ZS901F

Cat.6A Plug 8P8C 3U-50U
unshielded.



ZS901G

Cat.5e Plug 8P8C 3U-50U
shielded.



ZS901H

CAT6A Plug 8P8C 50U
shielded.



ZS902A/B/C/D

Boots.



ZS902C



ZS902D

Order Information:

Item No.	Description
ZS902A	≤5.8MM
ZS902B	≤6.8MM
ZS902C	≤10MM
ZS902D	≤8.5MM



ZS902A/B



STRUCTURE CABLING NETWORK TOOL

ZG201

Crimping tool for Rj45.



ZG203

Crimping tool 8P+6P+4P.



ZG206

Crimping tool 8P+6P,6P+4P.



ZG207

Crimping tool 8P+6P+4P.



ZG208

Crimping tool 8P+6P+4P.



ZG216

Crimping tool 8P+6P.



ZG218

Crimping tool 8P+6P,6P+4P.



ZG294/G296

Crimping tool for RJ11
Crimping tool for RJ12.



ZG301

BNC crimping tool.





STRUCTURE CABLING NETWORK TOOL

ZG110

110 IDC impact tool.



ZG225

Stripper.



ZG312

Coaxial cable stripper.



ZG314

110 IDC impact tool.



ZG324

110 Impact tool.



ZG501

Coaxial cable stripper.



ZG601

Plastic 110 tool w/stripper.



ZG602

KRONE Impact tool.



ZG603

Impact tool with 5 pairs.





STRUCTURE CABLING NETWORK TOOL

ZG313

Duplex crimping tool for RJ45.



ZG568A

Crimping Tool
8P+6P
6P+4P.



ZG568B

Crimping tool
8P+6P
6P+4P.



ZG258

RJ11, RJ45 Cable tester.



ZG268

RJ11, RJ45, BNC, USB4 in 1
Cable tester.



ZG278

RJ11, RJ45, BNC, USB, IEEE1394
Cable 5 in 1 Cable tester.



ZG288

RJ11, RJ45, BNC Cable tester.



ZG468

RJ11, RJ45 Cable tester.





STRUCTURE CABLING NETWORK TOOL

ZSP-H548A

For crimping RG59, RG6 and RG11 F type compression connectors.



ZSP-352

coaxial cable stripper(RG6,7,11,59).



ZSP-106E

coaxial crimping tool.



ZSP-336N3

Crimping tool for "S901H" FTP CAT6A Plug.



ZSP-T3141A

110 IDC in-pact tool.



● GLOBAL MARKET



For more information
please visit us at:
www.zion-communication.com



■ China - Head office

EMAIL: info@zion-communication.com
TEL: +86 571 63804414
FAX: +86 571 63804424
ADD: NO.68, HuaQiao Road, JinCheng Street, LinAn,
ZheJiang, China 311300